



COMPRESSION HAS NEVER
FELT THIS GREAT

POWERSKIN
CARBON AIR²



CARBON TECHNOLOGY

A CULTURE OF CONSTANT IMPROVEMENT

The flagship Carbon range of competition swimsuits is the most recent implementation of arena's breakthrough technology: a carbon cage is integrated into the suit's fabric to deliver intelligent muscle compression when and where it's needed. Since the Powerskin Carbon-Pro's launch in 2012, the range has created its own history, and today includes three distinct versions to choose from, *"because every swimmer is different"*.

POWERSKIN Carbon-Ultra revolutionary internal structure optimizes athlete's physiology to increase efficiency, improve body position, and reduce turbulence and drag.

POWERSKIN Carbon-Flex VX seam placement provides maximum range of motion and freedom of movement.

POWERSKIN Carbon-Air ultralightweight fabric makes it feel like a second skin.

Now **in 2019** there's a new kid on the block - the **POWERSKIN Carbon-Air²** - and it's taken the "Air" concept to a whole new level: it's lighter, it has a better fit, it's more comfortable, and it offers even greater freedom of movement.

POWERSKIN
CARBON AIR²



A close-up photograph of a person wearing a blue athletic top. The top has a yellow logo on the shoulder that reads "aren". The person's arms are crossed, and the background is a blurred blue wall.

LIGHTER FREER BETTER

The Carbon-Air² features two main improvements:

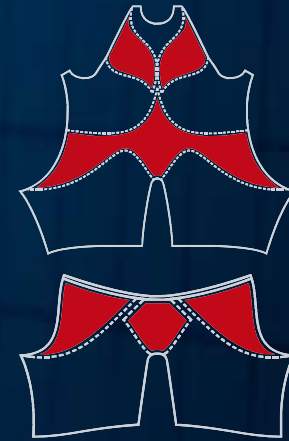
• **THE INTERNAL LINING**

is designed in 3 separate panels, offering enhanced **freedom of movement** with less weight.



• **THE NEW ONE-PIECE CONSTRUCTION**

gives the suit a **better fit** and feel so that it feels **like a second skin**.



The **Carbon-Air²** is made from the same proven **woven fabric** as the original Carbon-Air, including **Horizontal Carbon Bands**, so all the benefits of this fabric are retained: **lightness, compression, low drag**. Together, these attributes combine to make the new Carbon-Air² **lighter, more flexible, and more comfortable**.



CARBON BANDS FABRIC

COMFORTABLE COMPRESSION

Integrated **horizontal carbon bands** lock down at a critical stretch point to provide compression on overextended zones, core stability and power when and where it's needed.

The result is a **lighter form of Intelligent Compression** with the **comfort of a second skin.**



INTERNAL LINING

NEW

REDESIGNED
GREATER

FOR
FREEDOM

The **internal lining** of the Carbon-Air² consists of **3 separate panels** to give greater freedom of movement.

In **woman's suits**, this results in **less compression across the chest**, which liberates breathing and allows the swimmer to move more freely.

For **jammers**, it **reduces pressure on the hips** and improves flexibility around the hip flexors. With less internal lining, both women's and men's suits are lighter and absorb less water, thus reducing drag and improving glide.



NEW

ONE PIECE CONSTRUCTION

SECOND SKIN EFFECT

Made from just **one piece of fabric**, the Powerskin Carbon-Air² has only one bonded seam at the back, which offers **supreme comfort** and reduces any potential restriction of movement since there are **fewer pressure points on the body**.

In addition, **the absence of multiple seams** means that the suit **absorbs less water**, resulting in **less drag** and an **advanced hydrodynamic** effect that helps the swimmer glide cleanly through the water.

It's also **easier to put on**, and once it's on the body, it feels just like a second skin.

ONE
SINGLE PIECE DESIGN



POWERSKIN
CARBON AIR²

WOMAN

001128 / Powerskin Carbon-Air² Full Body Short Leg (Open)



853

Electric blue
Dark grey
Fuu yellow

235

Psycho lime
Orange

553

Black-Black
Gold

001129 / Powerskin Carbon-Air² Full Body Short Leg (Closed)



853

Electric blue
Dark grey
Fuu yellow

235

Psycho lime
Orange

553

Black-Black
Gold

MAN

001130 / Powerskin Carbon-Air² Jammer



853

Electric blue
Dark grey
Fuu yellow



235

Psycho lime
Orange

553

Black-Black
Gold



POWERSKIN
CARBON AIR²



POWERSKIN
CARBON AIR²

ARENAWATERINSTINCT.COM

